



Bridging

significant

gaps?

Dr. Nils Rettberg

Versuchs- und Lehranstalt für Brauerei in Berlin (VLB) e.V.



**VLB
BERLIN**

Beer quality

Chemical, physical, and organoleptic properties of a product, that aim to be consistent

Quality control and management

All measures carried out to assure product quality, mainly driven by diverse analytical tools

(Significant) gaps in quality control?

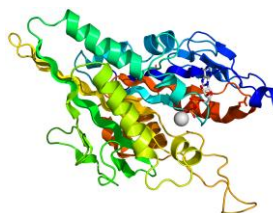
Beer is a complex mixture of 1000s of substances covering a wide range of molecular weight, polarity, concentration. Understanding variations of beer quality on molecular basis is an ongoing challenge of brewing science.

OMICS

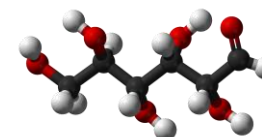
- collective characterization and quantification of pools of biological molecules responsible for the structure, function, and dynamics of cells/organisms/biological systems



genomics



proteomics



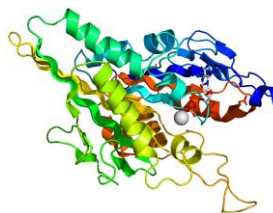
metabolomics

METABOLOMICS

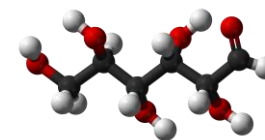
- analysis of organic molecules detectable in a organism / plant / cell / sample with a molecular weight typically < 1500 Da



genomics



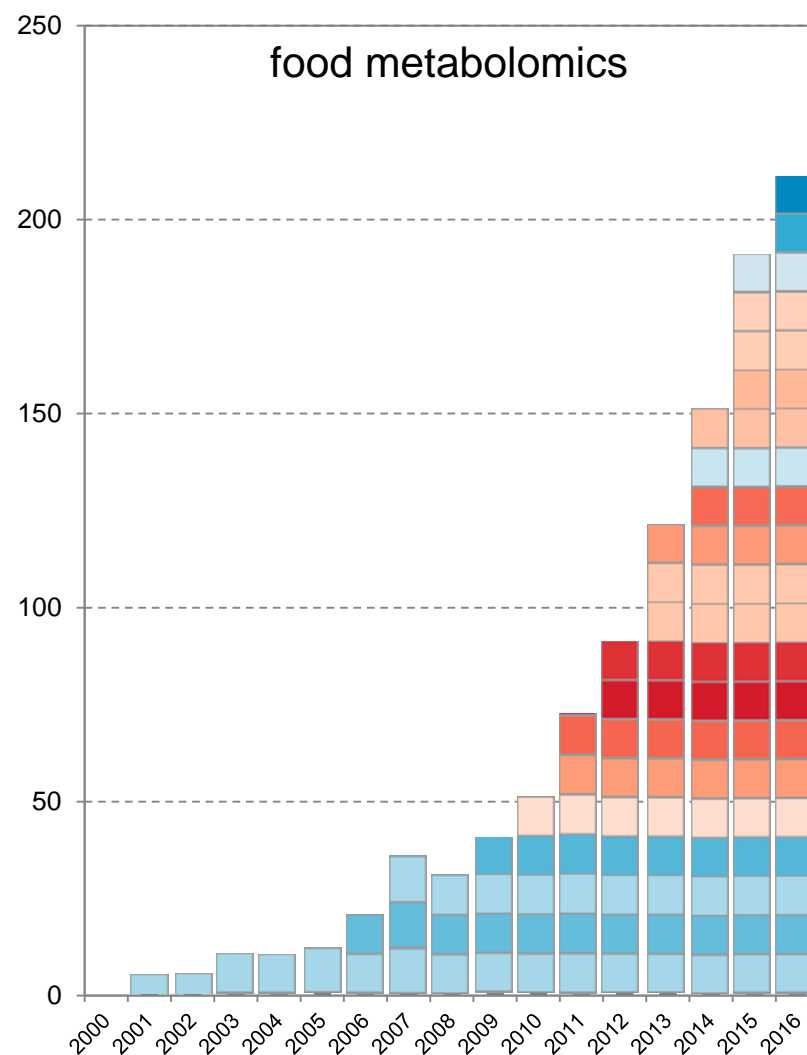
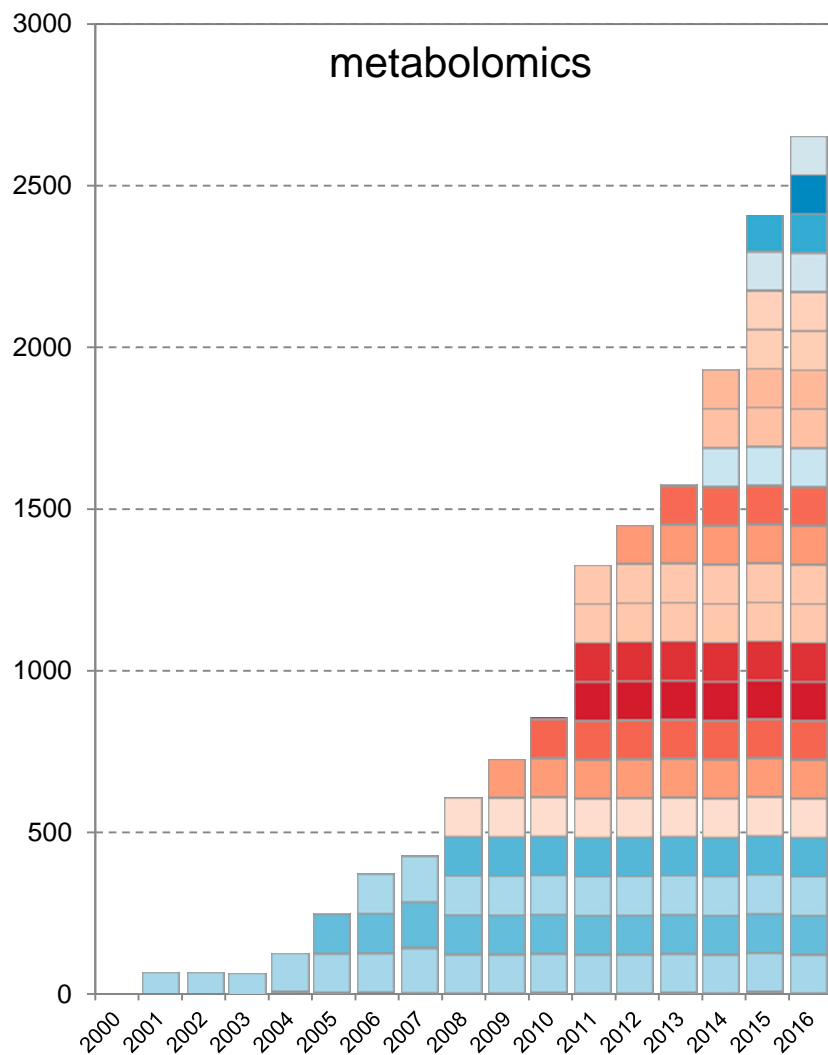
proteomics



metabolomics

physiological and environmental influence

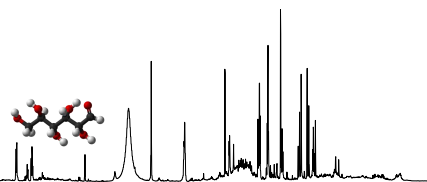




1) instrumental analysis



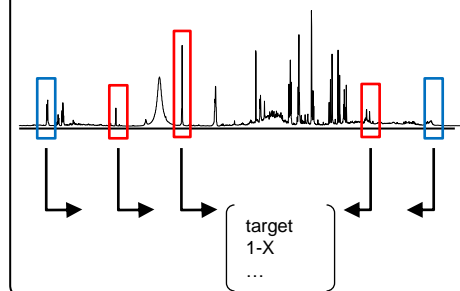
2) data collection



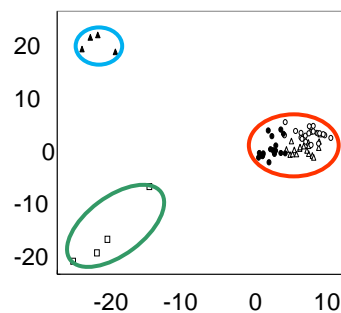
647658429238719879135681756
 968163786196581376581745607
 836923478978397639876397683
 969726587565692492972989699

use metabolite profiles
to distinguish between
samples

4) identification



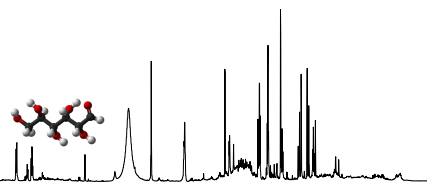
3) data reduction and statistics



1) Instrumental analysis



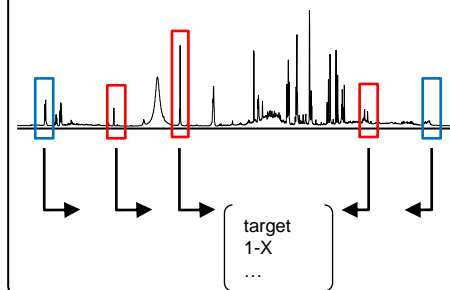
2) data collection



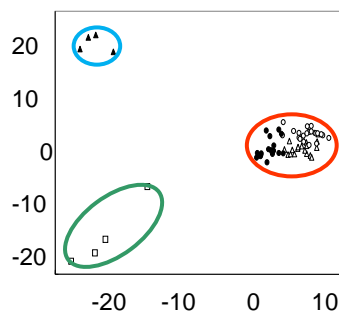
647658429238719879135681756
 968163786196581376581745607
 836923478978397639876397683
 969726587565692492972989699

use metabolite profiles
to distinguish between
samples

4) identification



3) data reduction and statistics

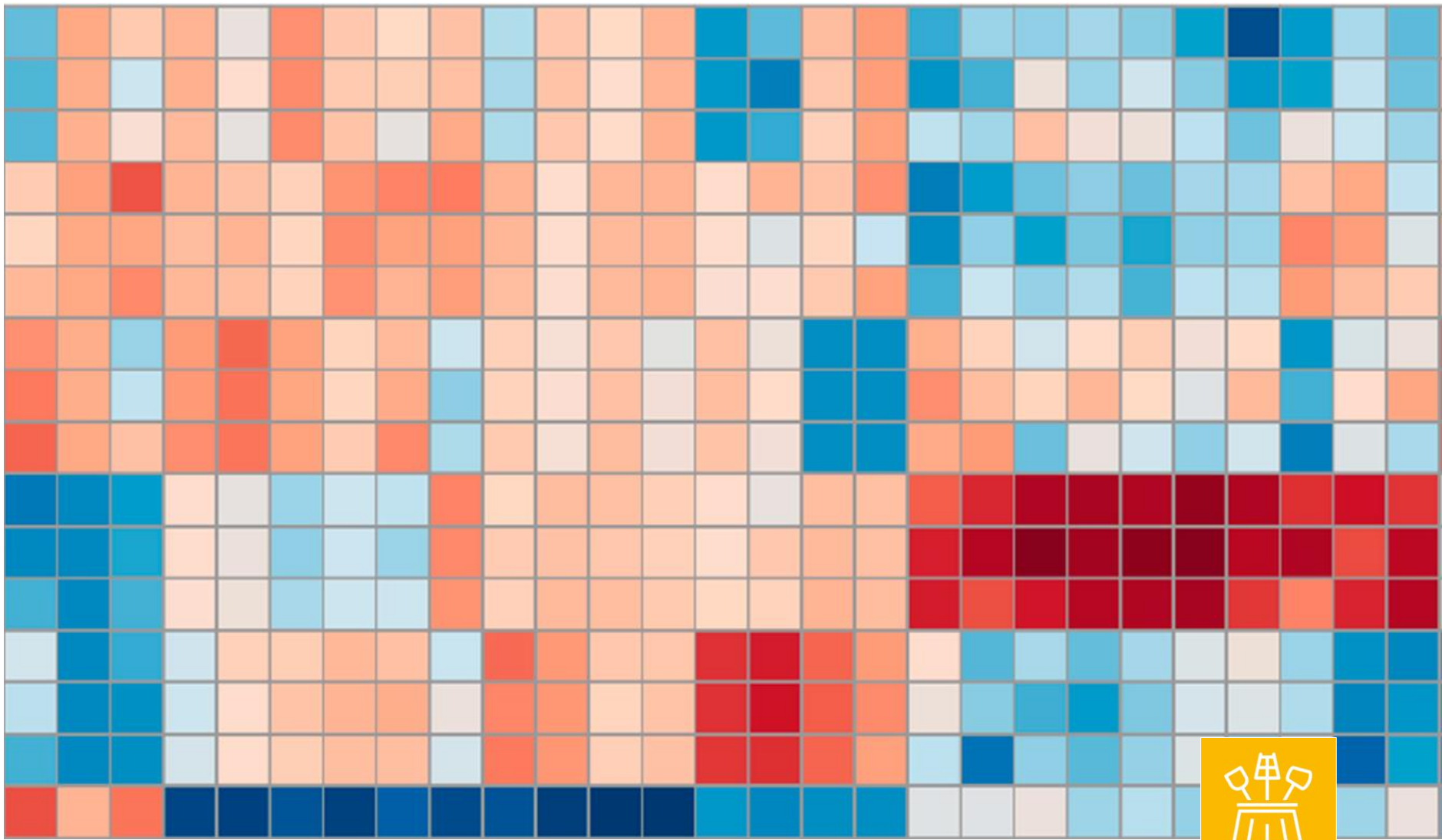


select significant and
metabolites as markers for
targeted approaches
(optional)

beer metabolomics



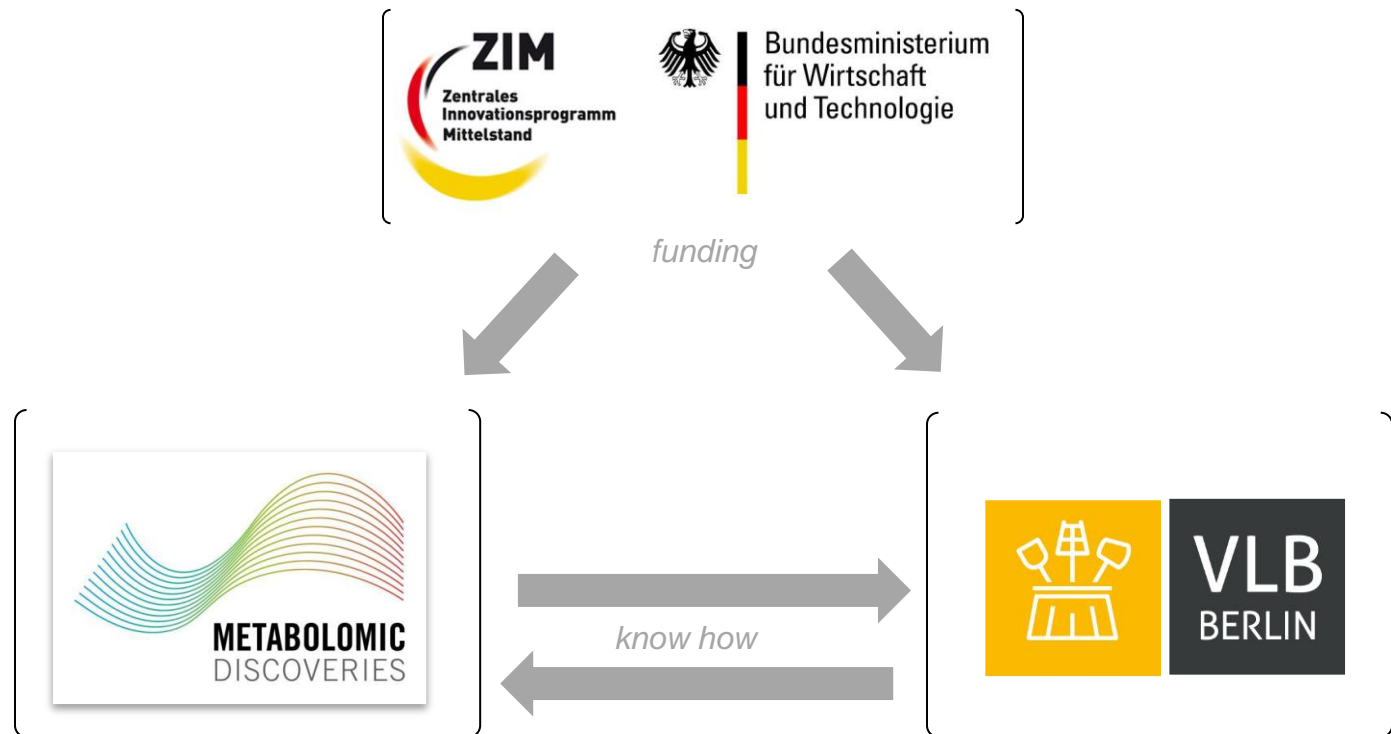
Autor	Year	Analytics	Statistics	Findings
<i>Duarte et al.</i>	2002	¹ H NMR	PCA	Distinction between lager and ale
<i>Duarte et al.</i>	2004	FTIR-ATR und ¹ H NMR	PCA	Distinction between lager, ale, and non alcoholic beer
<i>Nord et al.</i>	2004	¹ H NMR	PLS	Identification and quantification of various metabolites in beer
<i>Lachenmeier et al.</i>	2005	¹ H NMR	PCA, PLS	Distinction of malt types and brewing sites
<i>Almeida et al.</i>	2006	¹ H NMR	PCA	Distinction between brewing site and date
<i>Khatib et al.</i>	2006	1D und 2D ¹ H NMR	PCA	Distinction of pilsner style beers from different brands
<i>Pope et al.</i>	2007	DIMS/GC-ToF	PCA/CVA	Comparison of metabolic footprinting of different yeast strains
<i>Cajka et al.</i>	2010	SPME-GC-ToF	PLS-DA, LDA, ANN-MLP	Distinction of trappist beers vs. belgian beers via volatile fingerprints
<i>Zhu et al.</i>	2010	(ESI)-MS	PCA	Distinction between pale pilsner, wheat/white beer, and lager
<i>Heuberger et al.</i>	2012	UPLC-ESI-QToF	PCA	Effects of storage temperature on non-volatile beer components
<i>Inui et al.</i>	2013	GC×GC-ToF	PCA	Changes in concentrations of hop aroma components during production
<i>Andrés-Iglesias et al.</i>	2014	UPLC-ESI-QToF	PCA	Distinction between alcoholic/non alcoholic beer
<i>Heuberger et al.</i>	2016	UPLC-ESI-QToF	PCA	Possible biological markers for rapid testing of beer stability
<i>Spevacek et al.</i>	2016	NMR	PCA, LMM	Comparison of metabolic profile during brewing process; Comparison purine metabolism of late and dry hopped beers
Hughey et al.	2016	UPLC-ESI-QToF	PCA	Identification of differentially expressed compounds in single hop IPAs



Metabolomics project

VLB
BERLIN

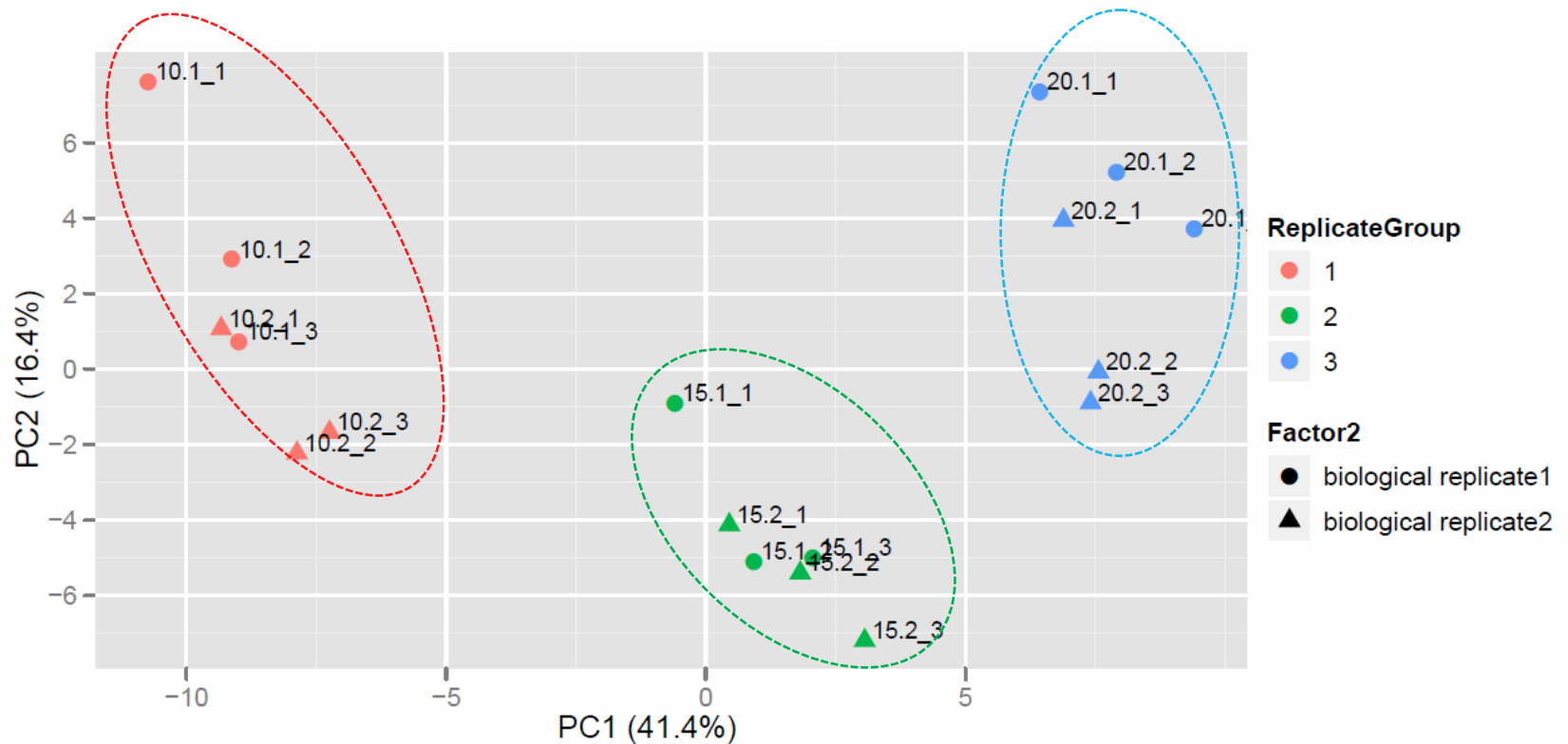
beer metabolomics project



- the German “Federal Ministry for Economic Affairs and Energy” funds innovative, market oriented research carried out by networks of small/medium sized companies and research institutes
- targets improvement of competitiveness + economic growth

Are changes in the brewing process (here fermentation regime) properly reflected by a non-target metabolomic approach?

PCA discrimination

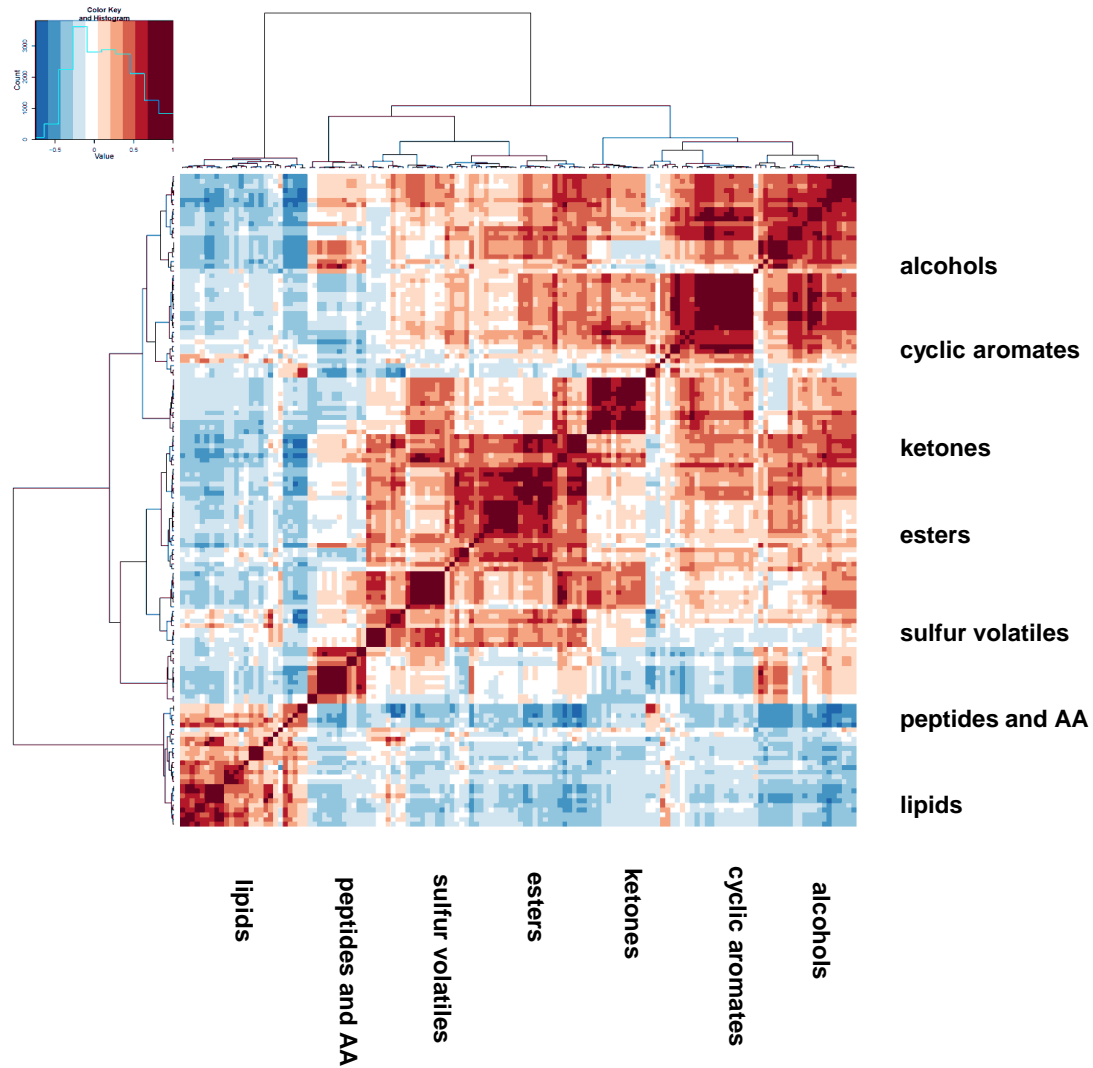


- based on metabolite data sets different fermentation regimes cluster
- rather high variance in biological replicates (pilot scale brewing?)

cluster heatmap



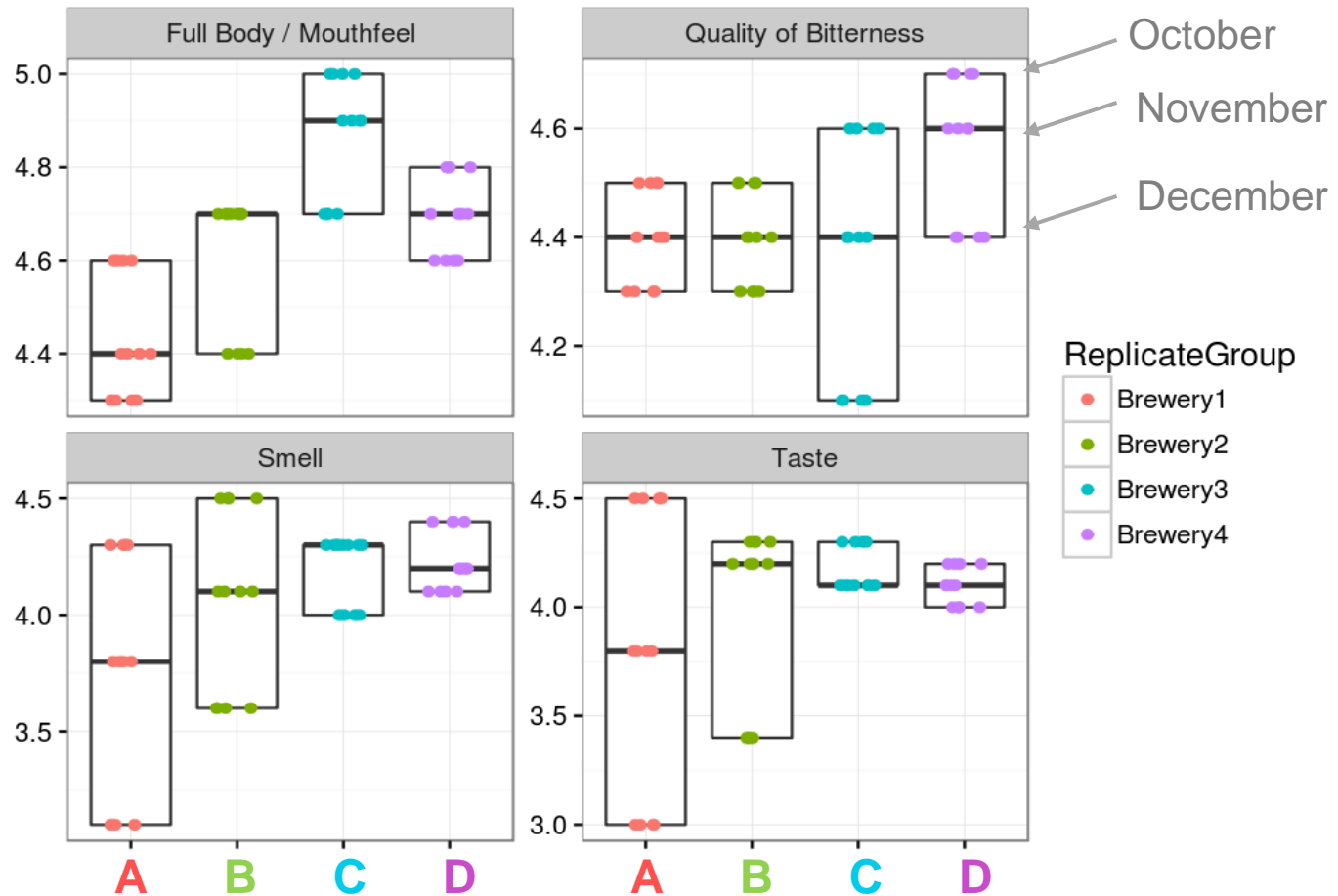
pairwise correlation heatmap



Which differences between (similar) beers can be identified by a global metabolite profiling approach?

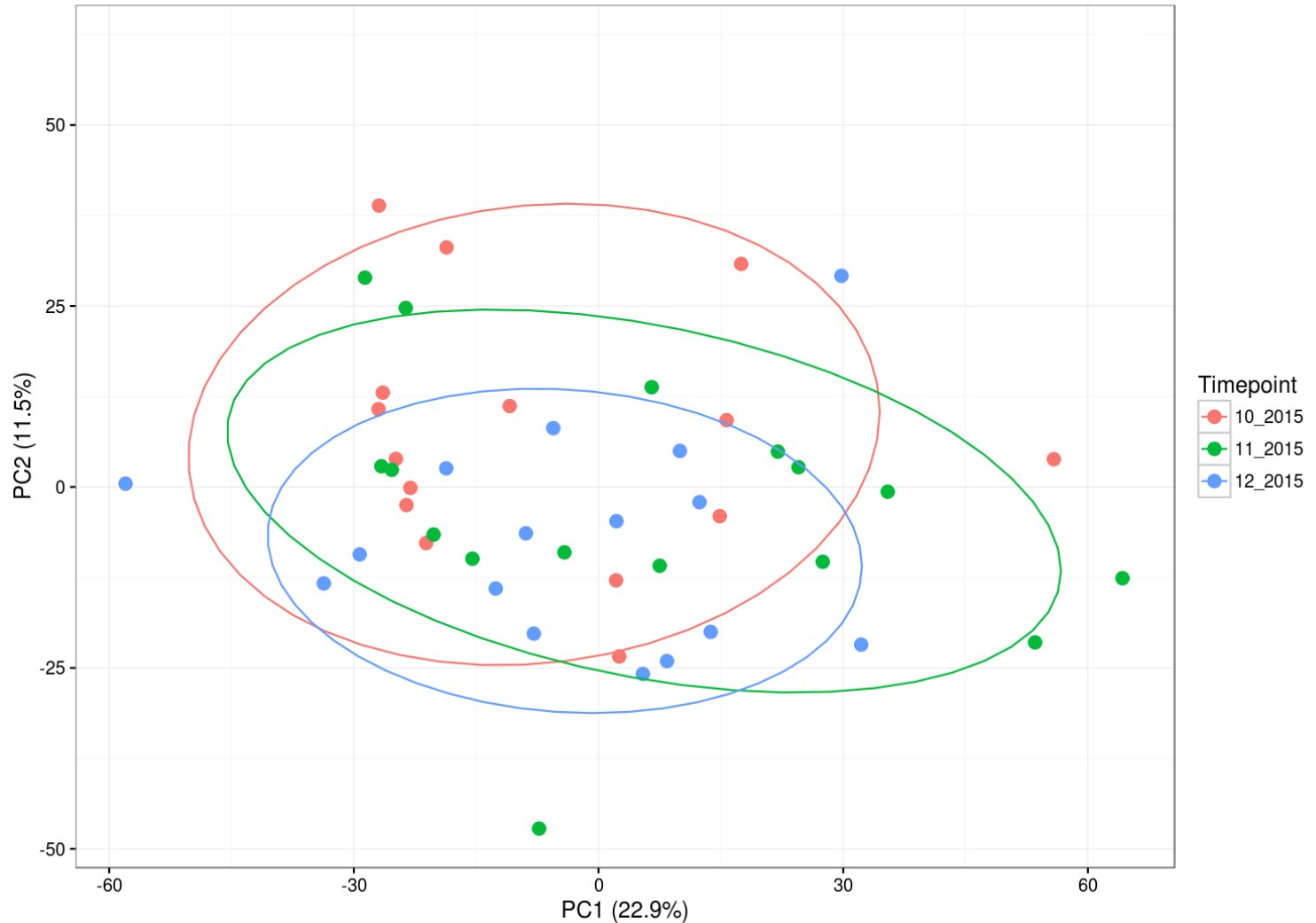
1. consistency trial (4 breweries, same product, 3 months)
2. beer analysis by GC-MS, SPME-GC-MS, and LC-TOF-MS (targeted beer analysis, sensory analysis,...)
3. data analysis and visualization by PCA, identification of significant metabolites,...

sensory data



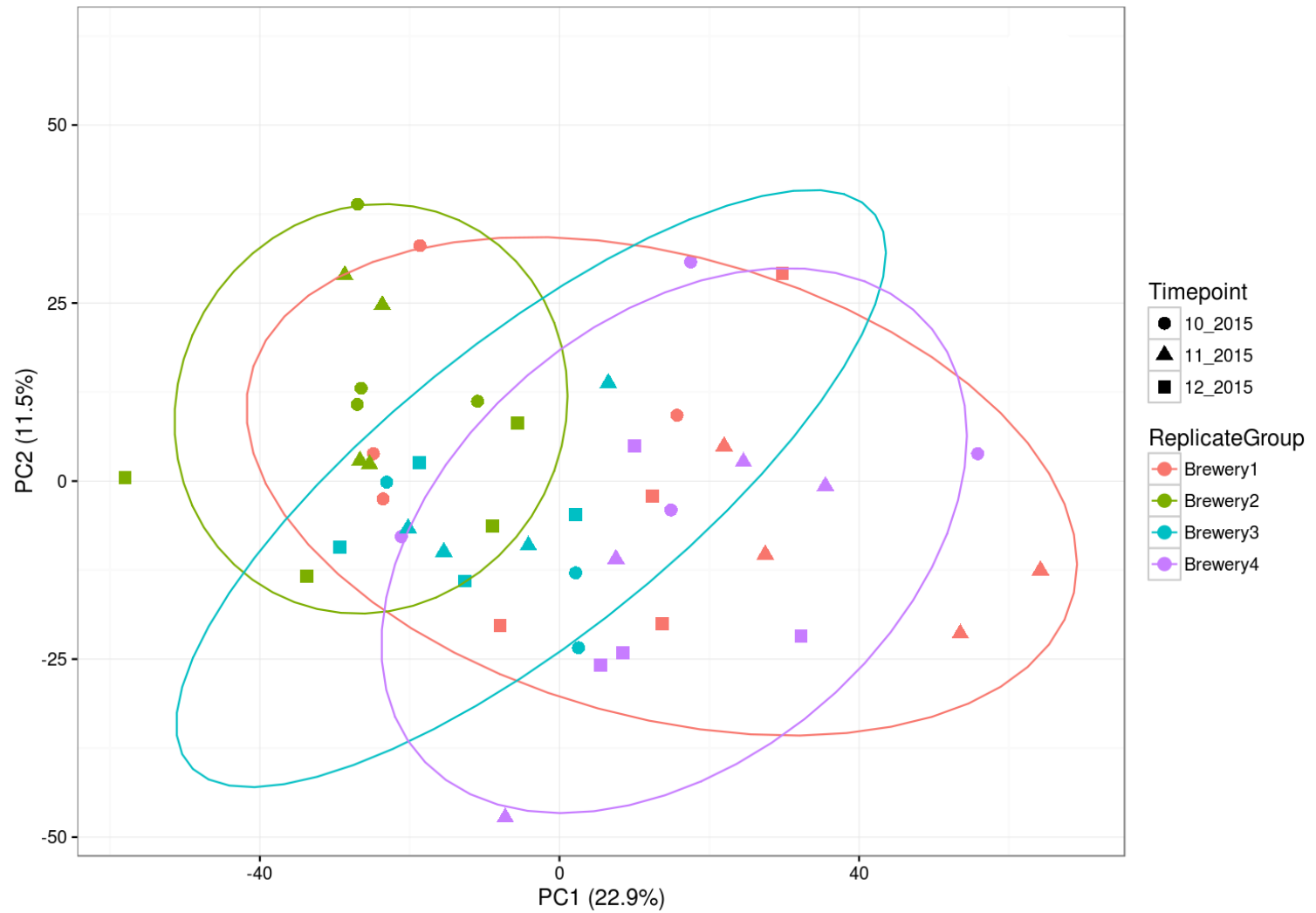
- Comparison of sensory data (5 Point scheme) applied to a single brand pilsner type beer from different production plants

PCA



- metabolite data clustered in respect to production date (month), colored ellipses describe the 50% confidence interval of the normal distribution for each group in the two-dimensional space of the PCA

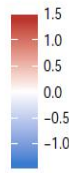
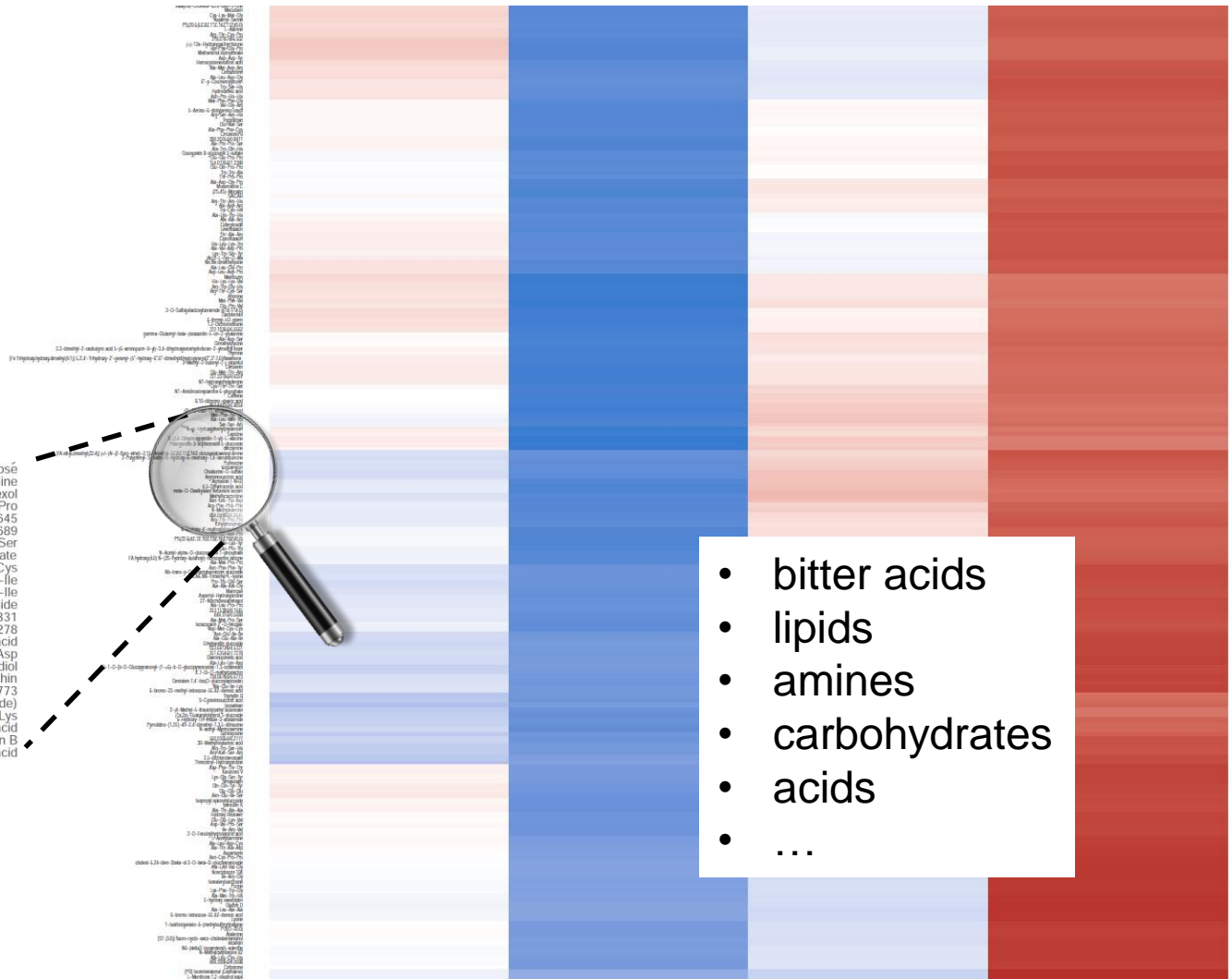
PCA



- metabolite data clustered in respect to production date (month) and brewing site (1-4), colored ellipses describe the 50% confidence interval of the normal distribution for each group in the two-dimensional space of the PCA

metabolite identification, annotation, ...

3255 compounds



- bitter acids
- lipids
- amines
- carbohydrates
- acids
- ...

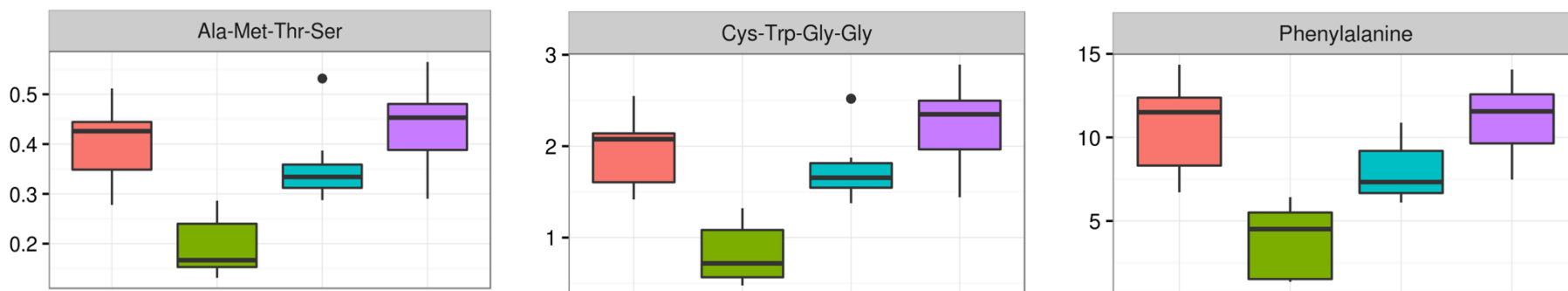
Mannose
 Aspartyl-Hydroxyproline
 27-Norcholestanehexol
 Ala-Leu-Pro-Pro
 253.1538@8.1645
 449.37@0.5689
 Ala-Met-Pro-Ser
 Isoscoparin 2'-O-ferulate
 Asp-Met-Cys-Cys
 Asn-Glu-Ile-Ile
 Ala-Glu-Ala-Ile
 Ethylvanillin glucoside
 333.6913@4.5331
 251.6354@7.7278
 Diaminopimelic acid
 Ala-Leu-Lys-Asp
 (R)-1-O-[β-D-Glucopyranosyl-(1→6)-β-D-glucopyranoside]-1,3-octanediol
 4,7-Di-O-methylcatechin
 738.0676@6.6773
 Genistein 7,4'-bis(O-glucosylapioside)
 Ala-Glu-Ile-Lys
 6-bromo-23-methyl-tetracos-5E,9Z-dienoic acid
 Triphyllin B
 S-Cysteinosuccinic acid

variable importance score

metabolite	VIP Score	Classification
549.12711 @1.5813	100.00	unknown
Glu-Ser-Val	81.54978	Peptide(tri-)
421.2424 @8.9307	76.57584	unknown
Asp-His-His-His	75.63124	Peptide(tetra-)
485.1783 @4.1378	72.55315	unknown
2-Hydroxyethanesulfonate	71.22231	Sulfonic Acids and Derivatives
Pro-Pro-Ser	69.76658	Peptide(tri-)
352.1742 @6.9477	69.15368	unknown
Asn-Asn-Asn-Asn	68.39585	Peptide(tetra-)
Asp-Val-Gly-Pro	67.09589	Peptide(tetra-)
Dimethyl succinate	60.76791	Carboxylic Acids and Derivatives
5-Amino-6-ribitylamino uracil	60.64853	Monosaccharides
Tyr-Lys-Arg-Tyr	60.34157	Peptide(tetra-)
Arg-Met-Phe-Asp	56.21668	Peptide(tetra-)
Methyl 2-aminobenzoate	55.70696	Benzoic Acid and Derivatives
8-Hydroxyguanosine	54.64307	Purine Nucleosides and Analogues
Gln-Trp-Gln-Gln	51.28974	Peptide(tetra-)
Piperitoside	50.8607	Flavonoids
Phe-Tyr-Phe-Lys-Ile	50.8044	Peptide(penta-)
Phenylalanine	50.36089	
Met-Ala-His	50.08508	
Cys-Trp-Gly-Gly	48.88984	
Glycerolphosphorylethanolamine	47.65788	
Gly-Pro-Trp	47.23474	
N6-(delta2-Isopentenyl)-adenine	45.93661	
Procyanidin B3	44.99882	

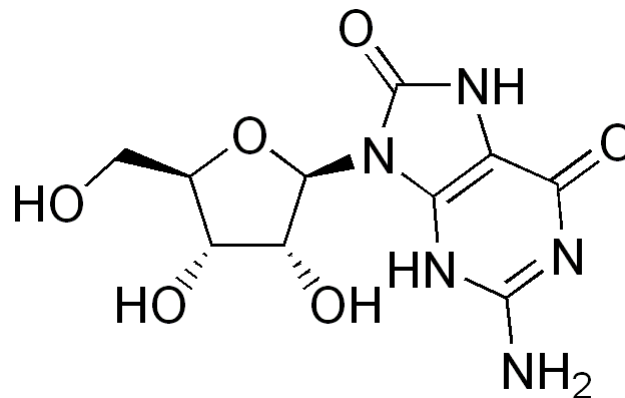
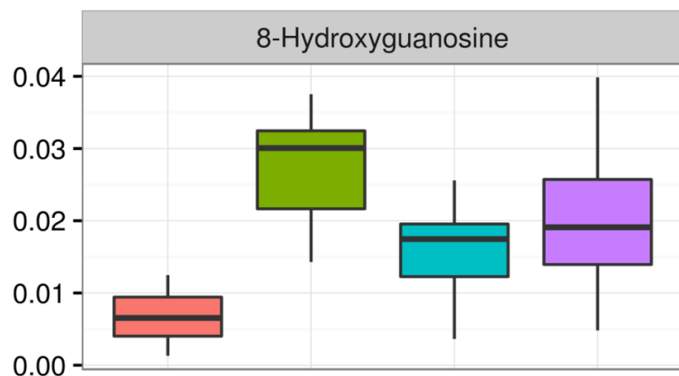
- metabolites showing significant variations between the four breweries calculated by “random forest technique”
- aim: rank the importance of variables in a regression or classification problem

peptides



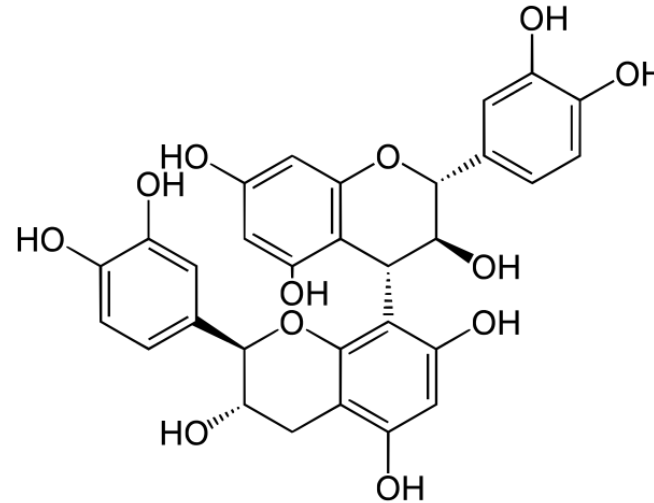
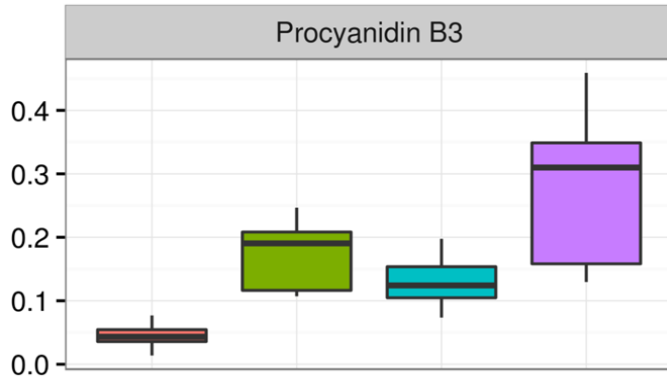
- 22 out of the 50 significant metabolites were peptides
- 13 peptides out of these 22 metabolites are showing the trends similar to box plots shown above
- peptides (and amino acids) were reported as significant metabolites in previous LC-MS based studies, direct correlation with beer quality are hard to draw

8-hydroxyguanosine



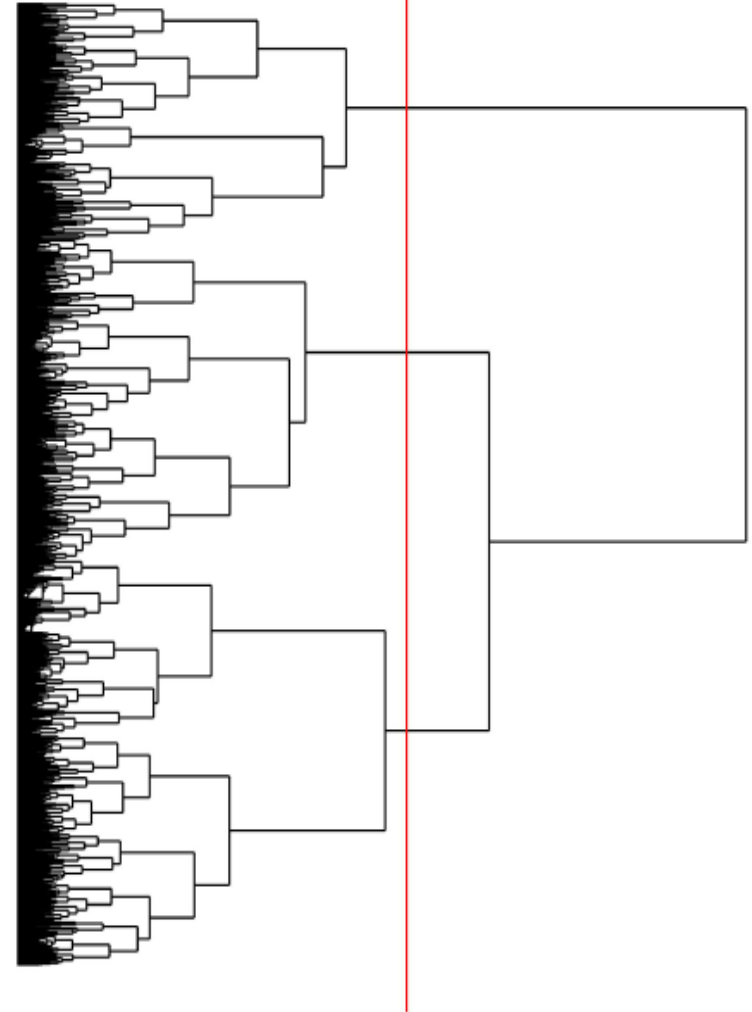
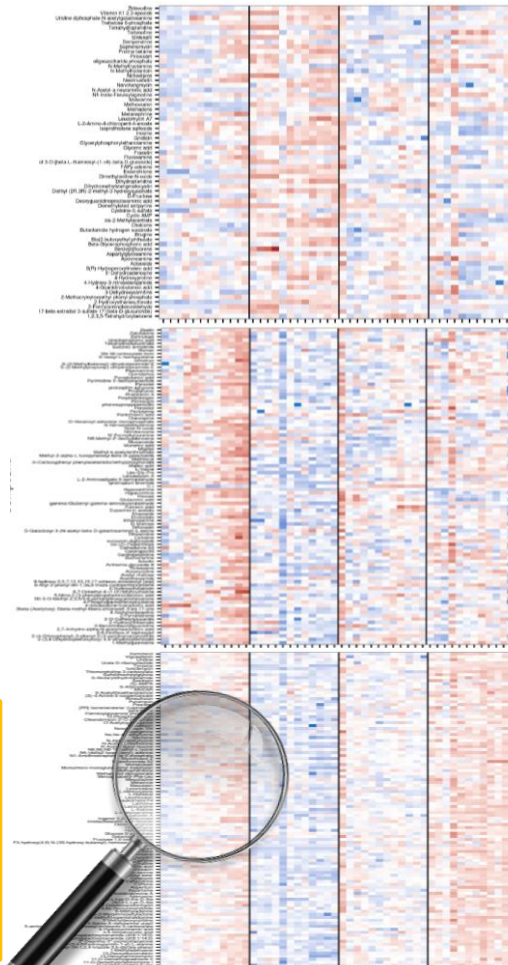
- 8-Hydroxyguanosine is a nucleoside formed by guanosine oxidation
- purines were reported to correlate with beer oxidation
- 5-MTA, Deoxyadenosine, and Guanine did not significantly contribute to differences between the breweries (fresh beer)

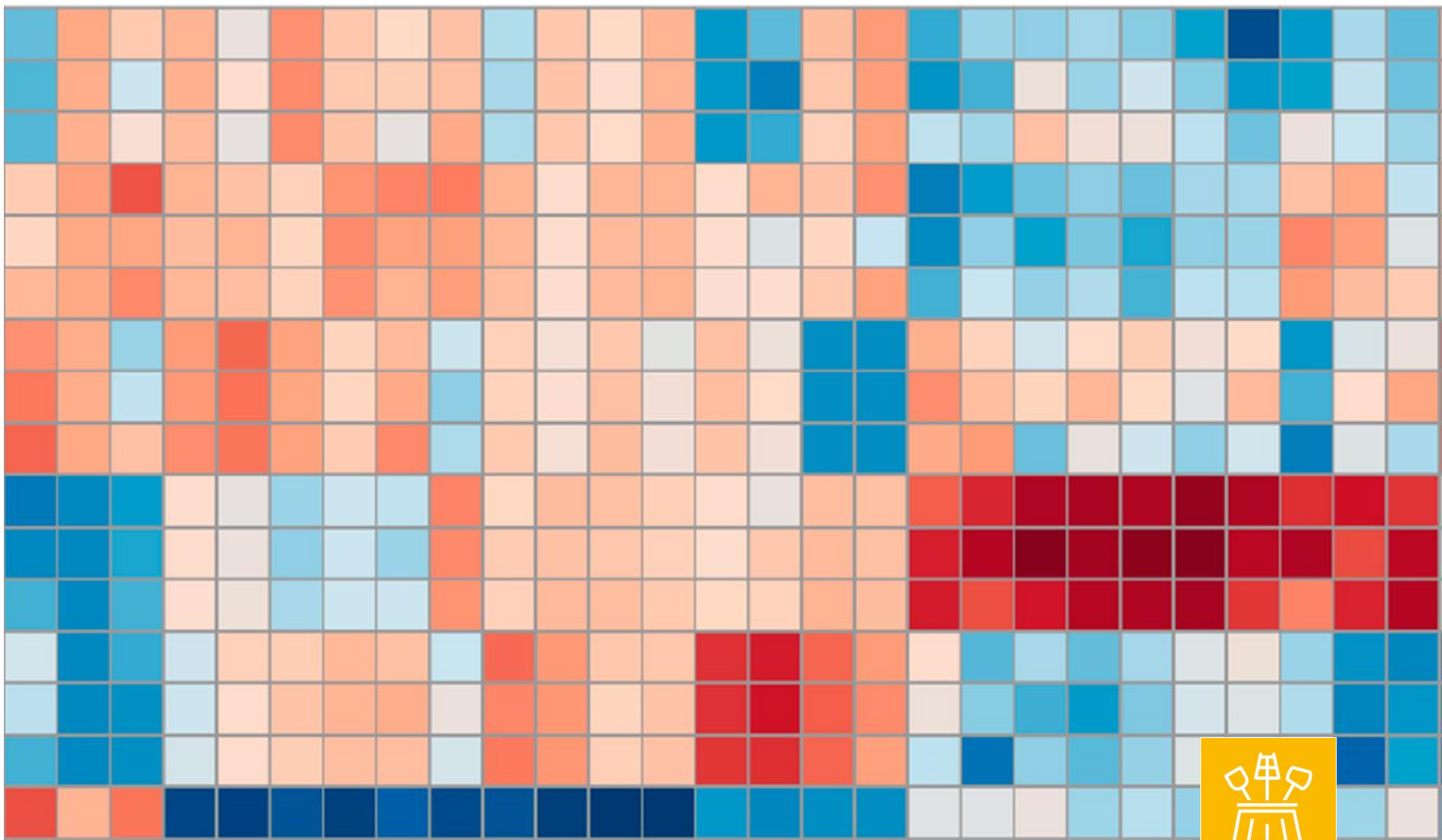
polyphenols



- Procyanidin B3 ((+)-catechin-(4 α -8)-(+)-catechin) has been reported in malt, hops, and beer
- physical beer stability, flavor stability...

cluster analysis



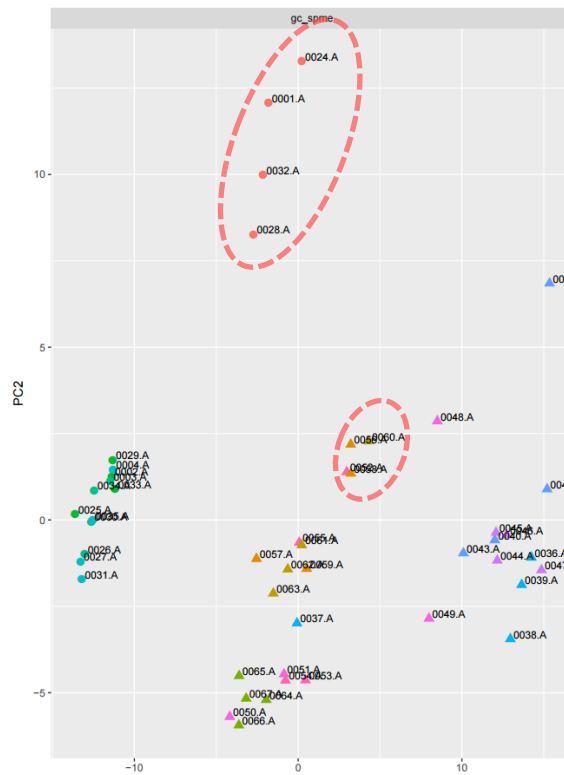
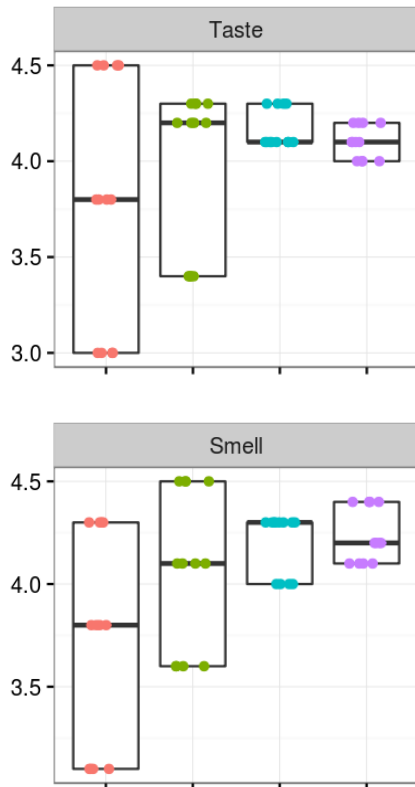


VLB
BERLIN

Odorants?

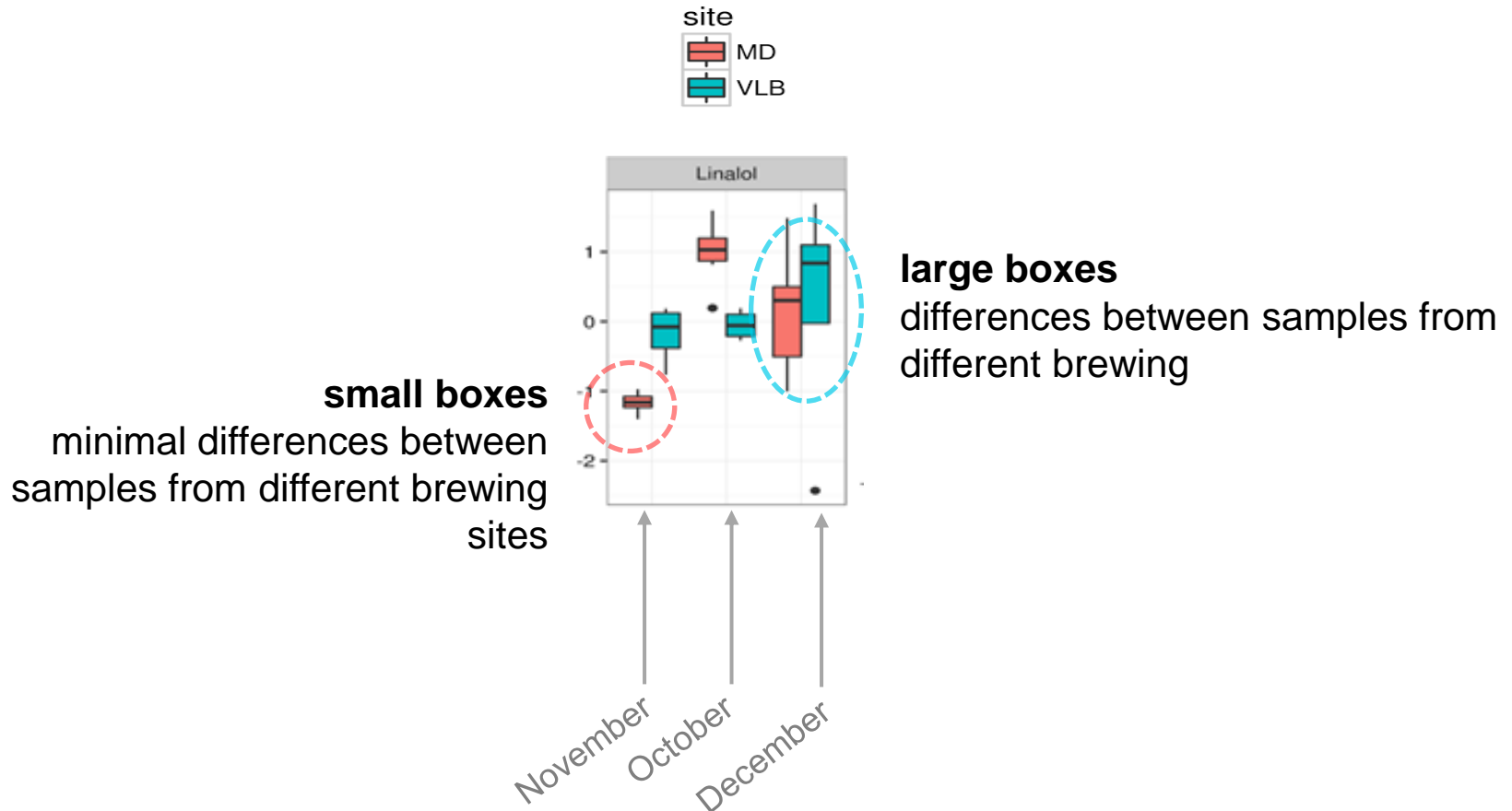
differences attributed to GC analysis?

- global metabolite profiling yielded 3255 compounds
- approx. 1000 metabolites were ranked with a VIP score > 0
- approx. 70 metabolites from HS-SPME-GC-MS ranked with a VIP score >0

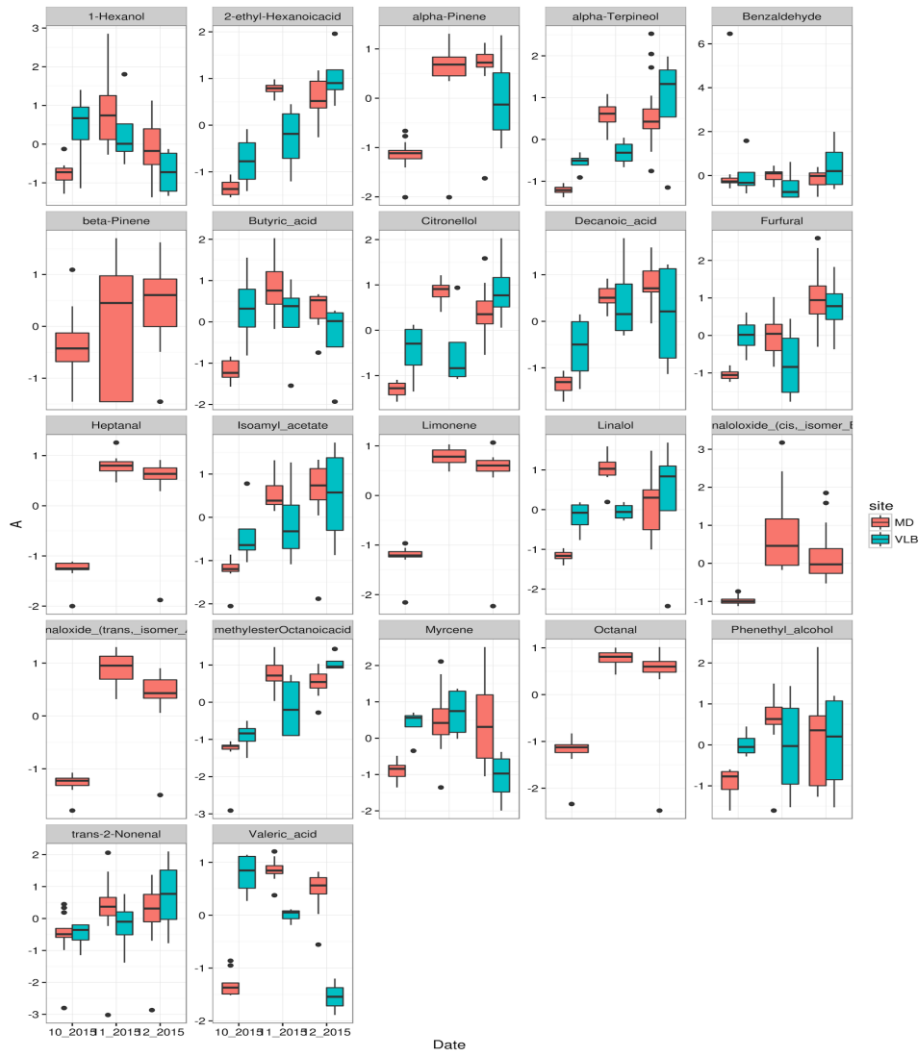


- 157.0835@5.0885 (31,75)
- 204.058@1.1643 (31,75)
- [...]
- ✓ ethyl pyruvate
- ✓ ethyl lactate
- ✓ isobutyl isobutyrate
- ✓ linalool
- ✓ linalool oxide
- ✓ isoamyl acetate
- ✓ phenylethylethanol
- ✓ [...]

targeted vs. untargeted GC analysis



targeted vs. untargeted analysis



- normalized (semi-) quantitative data of both assays match (similar trends)

Assumption: targeted approach more accurate

- untargeted assay is not sensitive enough to detect differences between samples (high standard deviation of technical replicates)
- some compounds (e.g. beta-pinene) were below LOQ in targeted assay but reported by the untargeted

bridging significant gaps?

- metabolomics are indeed applicable to practical issues (comparative studies)
- LC-MS based technologies (will) surely help to understand the complex polar and non-volatile beer metabolome
- profiling of the volatile fraction is crucial (sensitivity), the quality of targeted GC-MS assays is high
- metabolomics complement the toolbox of brewing analytics / research
- compound identification remains challenging
- there is plenty of work ahead...



- Dr. N. Schauer
- Dr. O. Gräbner
- M. Heiser



Bundesministerium
für Wirtschaft
und Technologie

- ZIM KF2132338



VLB
BERLIN

- Dr. S. Thörner
- J. Koserske
- L. Knoke
- C. Schubert
- Prof. L.-A. Garbe



VLB
BERLIN

Thank you!